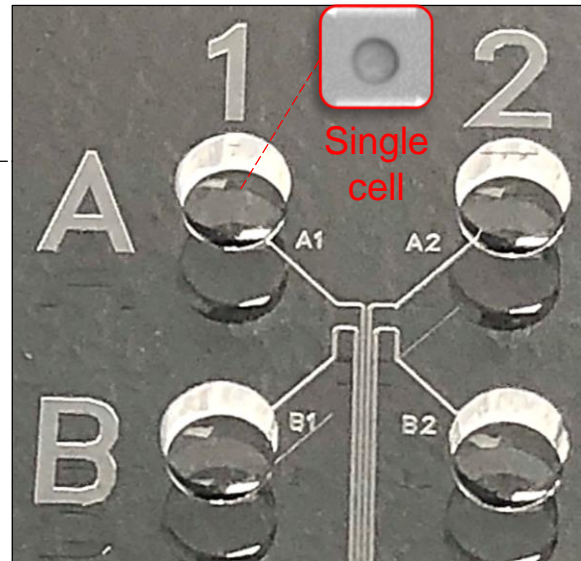
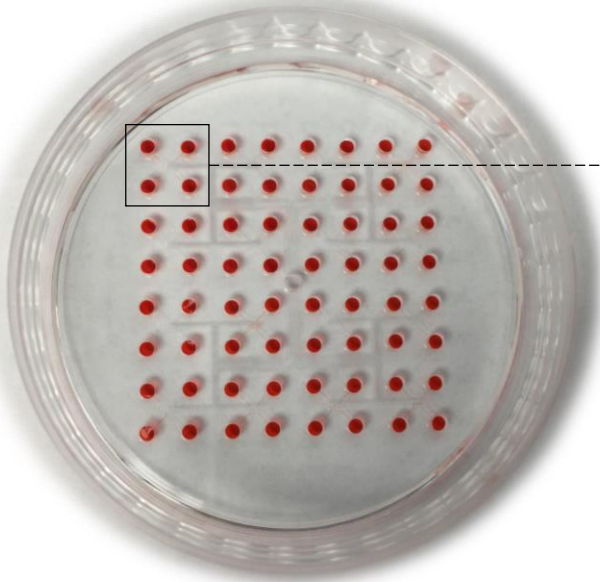


Smart Aliquotor CE (Compact Edition) provides the simplest & fastest way to uniformly load small volume liquids into 64 wells and precisely handle single cells for accelerating single-cell clonal and genetic analysis.



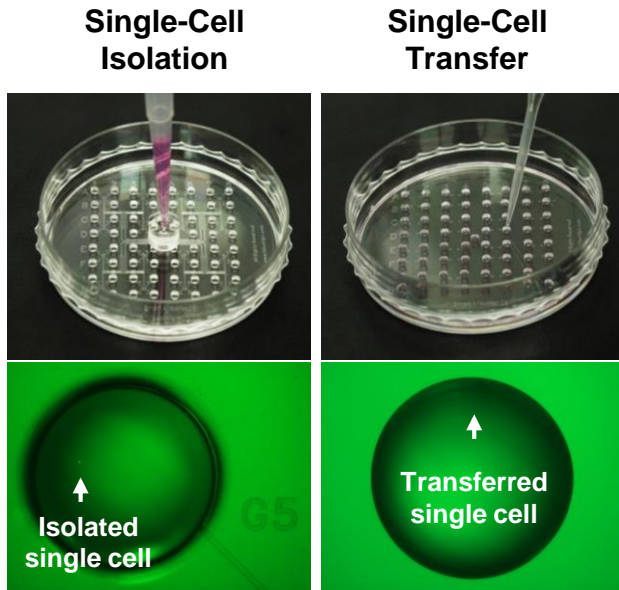
Specifications

Description

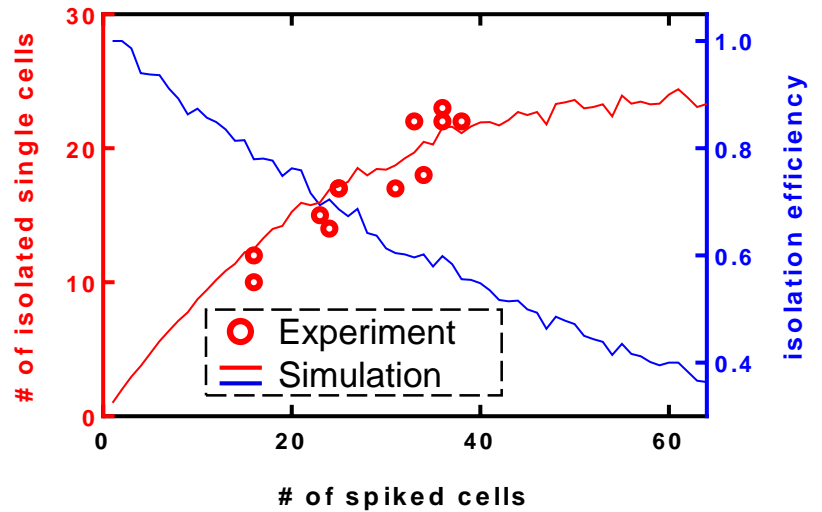
Material of device	Biocompatible PS & PDMS
Size of device	60 mm (Diameter) & 12.6 mm (Height)
Sterilization of device	Sterile
Number of well / Label of well	64 wells / millimeter- & micrometer-scale numbers
Size of well	1.8 mm (Diameter) & 1 mm (Height)
Bottom coating of well	Tissue culture treated
Working volume	1-4 μL per well or 64-256 μL per device
Handling of liquids & single cells	Common single-channel pipette
Cell size can be compatible	$\leq 50 \mu\text{m}$
# of single cells can be isolated	~ 20 single cells per device
# of cell types can be handled	1 per device

Single-Cell Isolation

- Easy to operate with high efficiency
- High integrity for single-cell PCR

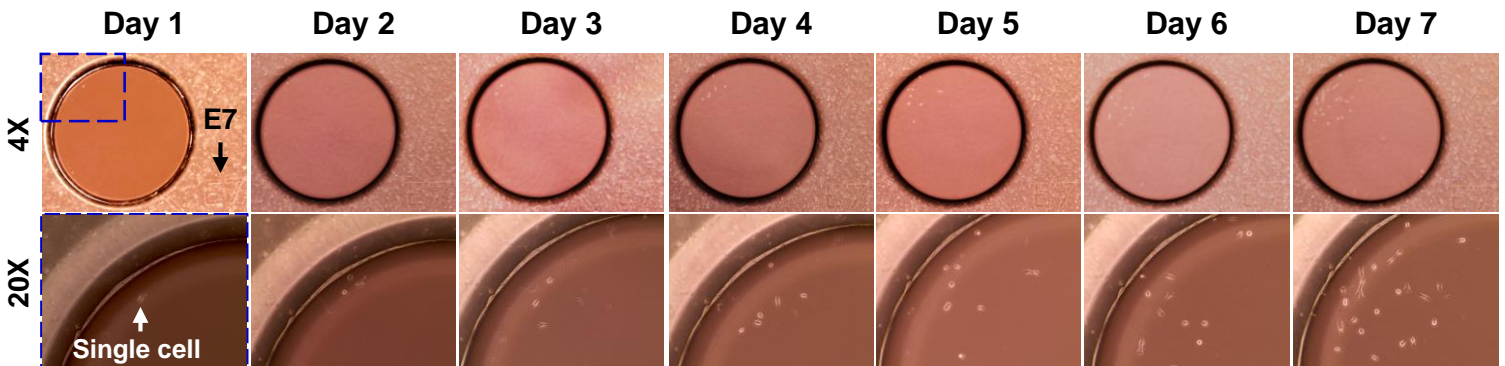


Estimated Number of Isolated Single Cells per Smart Aliquoter CE



Single-Cell Cloning

- High cell viability for clonal analysis
- Easy to track whole cloning process



Rare-Cell Isolation

- From CRISPR gene edited cells
- From clinical samples

