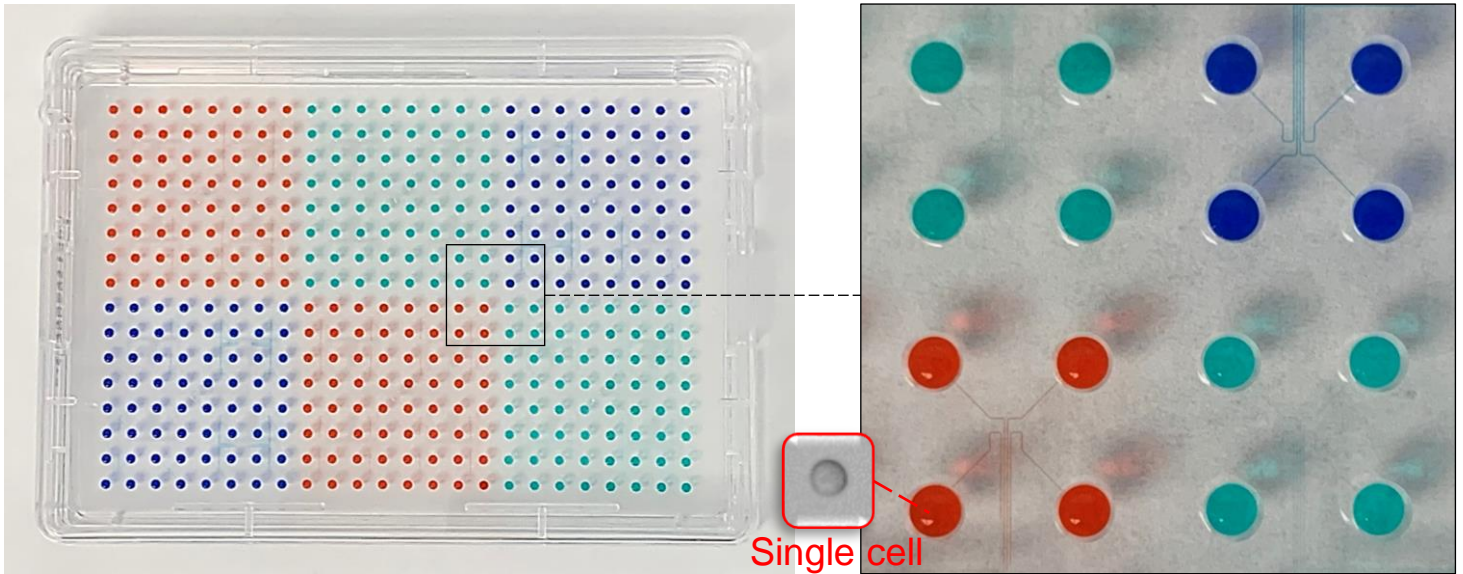


Smart Aliquotor EE (Extended Edition) provides the simplest & fastest way to uniformly load small volume liquids into 384 wells and precisely handle single cells for accelerating single-cell clonal and genetic analysis.



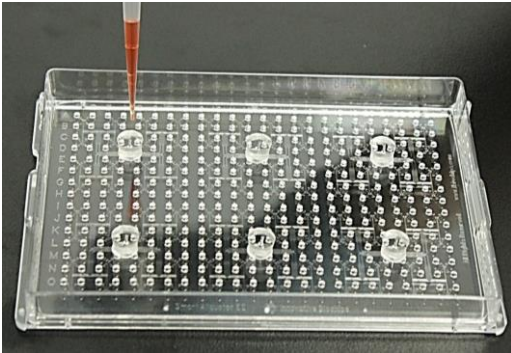
Specifications

Description

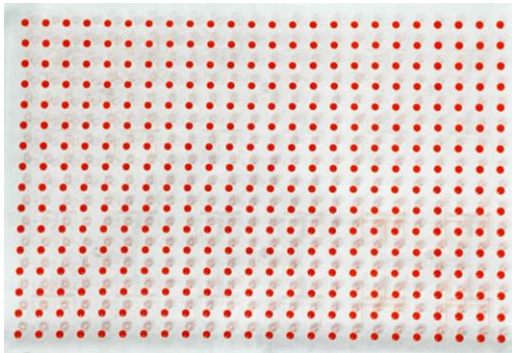
Material of device	Biocompatible PS & PDMS
Size of device	127.8mm (Length) & 85.5mm (Width) & 17.8mm (Height)
Sterilization of device	Sterile
Number of well / Label of well	384 wells / millimeter- & micrometer-scale numbers
Size of well	1.8 mm (Diameter) & 1 mm (Height)
Bottom coating of well	Tissue culture treated
Working volume	1-4 μL per well or 384-1536 μL per device
Handling of liquids & single cells	Common single-channel pipette
Cell size can be compatible	$\leq 50 \mu\text{m}$
# of single cells can be isolated	~ 120 single cells per device
# of cell types can be handled	1-6 per device

The Simplest & Fastest Way to Uniformly Load Liquids into 384 Wells

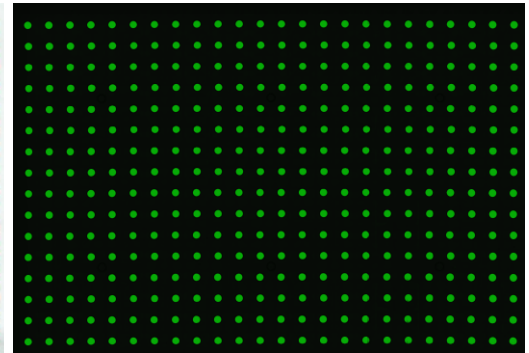
Smart Aliquoter EE contains 6 inlet adaptors to load liquids by common single-channel pipette



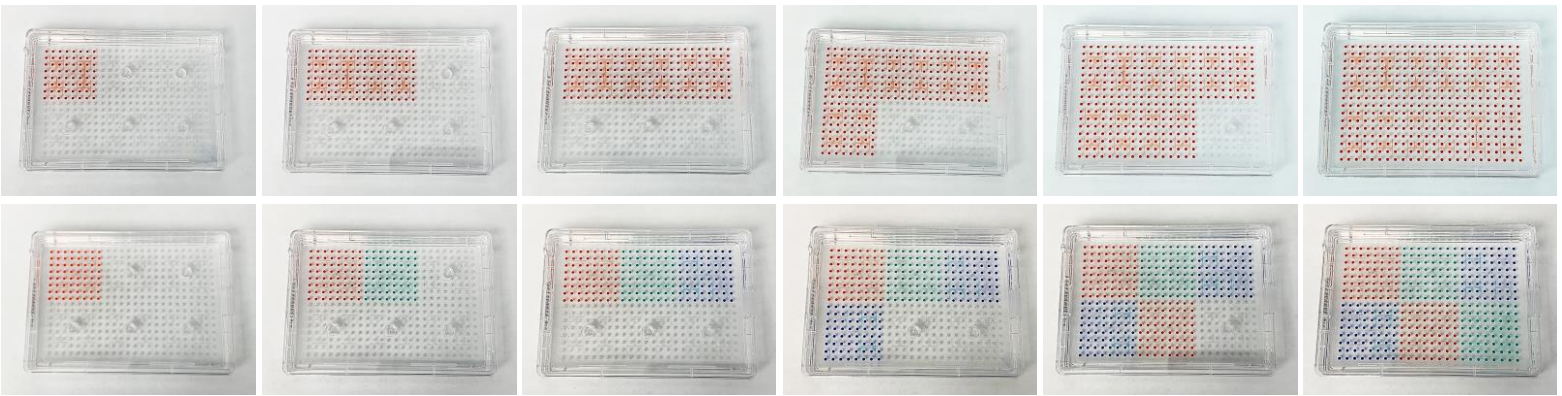
Load 1.5 μ L red dye solution into each well of one Smart Aliquoter EE



Load 1.5 μ L fluorescent dye solution into each well of one Smart Aliquoter EE

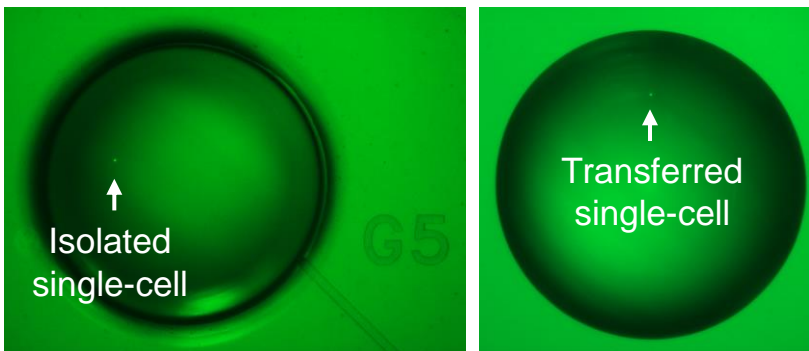


Sequential Loading of Dye Solution into Smart Aliquoter EE by Single-Channel Pipette

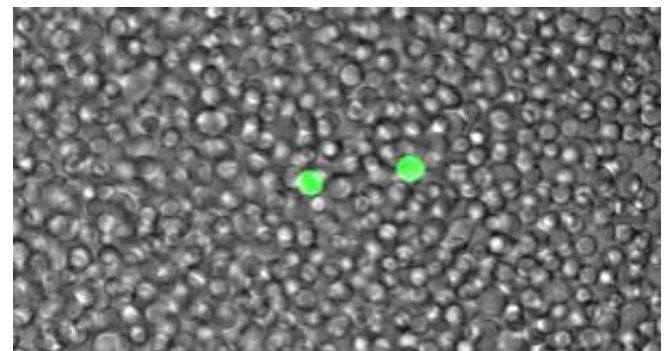


The Simplest & Fastest Way to Precisely Handle Single Cells

Single-Cell Isolation & Transfer



Rare-Cell Enrichment & Isolation



Single-Cell Cloning

