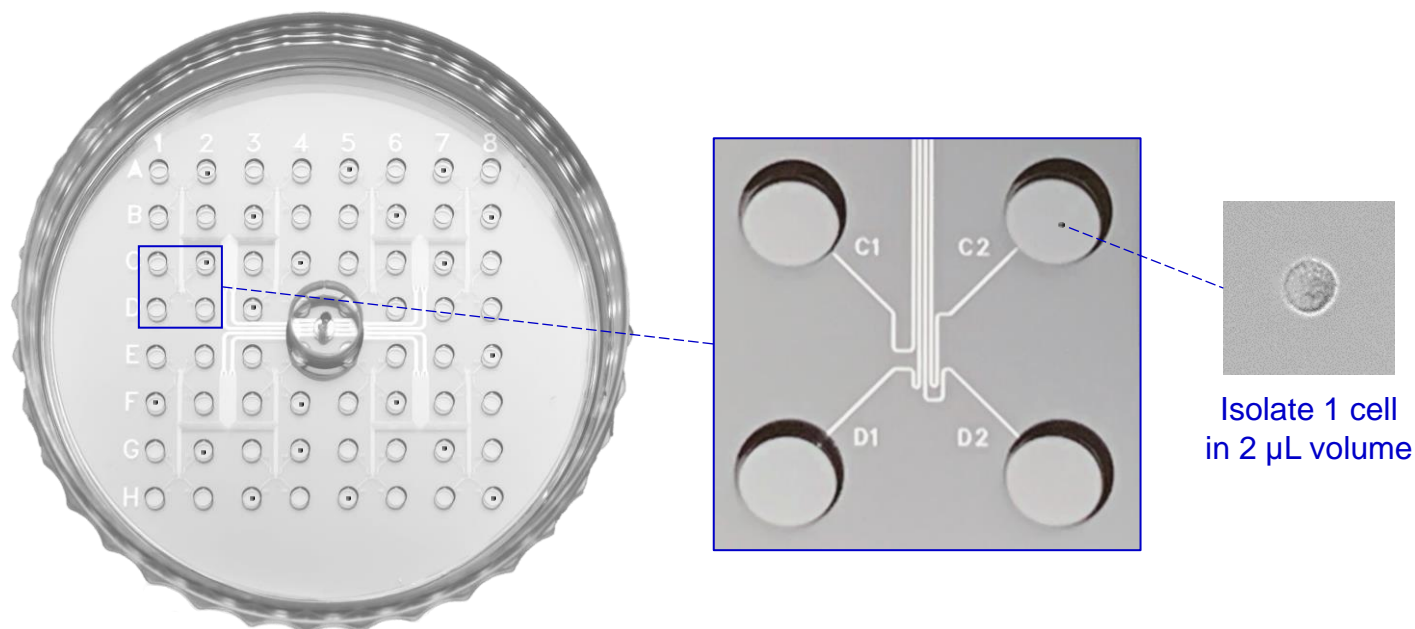


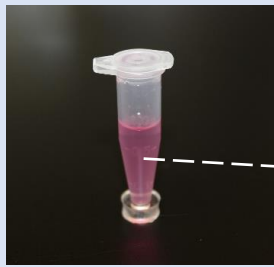
1CellDish™ Single-Cell Isolation Dish provides an easy, rapid, and cost-effective method to isolate single cells into small volumes for single-cell genetic analysis.



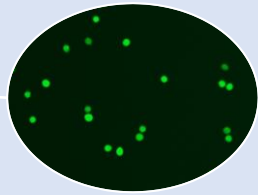
Cat. No. H2-SCD-5PK

| Specifications | Description |
|------------------------------|----------------------------------|
| Format | Standard 60 mm Petri Dish format |
| Material | Polystyrene & PDMS |
| Sterility | Sterile |
| No. of Wells | 64 wells (8 x 8 array) |
| Well Volume | 2.5 µL per well |
| Well Bottom | Flat polystyrene |
| Surface Treatment | Tissue culture-treated |
| Single-Cell Yield | ~ 20 per device |
| Single-Cell Isolation Volume | 2 µL |
| Compatible Cell Size | ≤ 50 µm (diameter) |
| Cell Types Can Be Isolated | 1 cell type per device |

Initial Cell Suspension

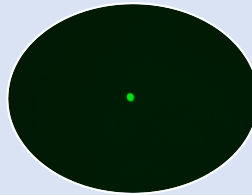


250-500 cells per mL



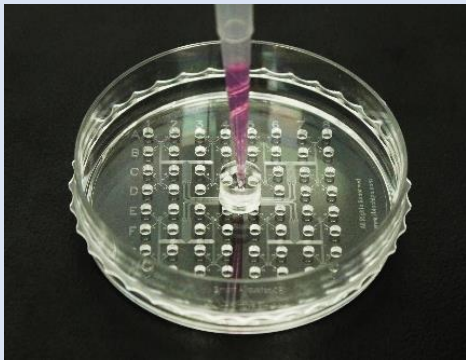
Final Cell Suspension: 1 Cell in 1 Tube

1 cell per 2 μ L

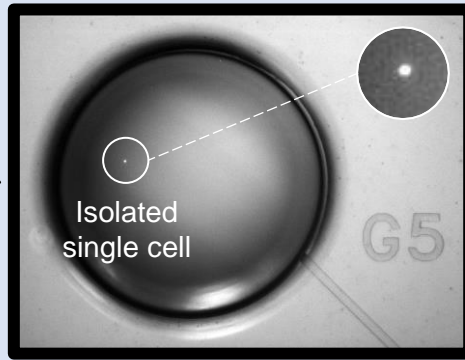


Single-Cell Isolation by 1 CellDish™-60mm

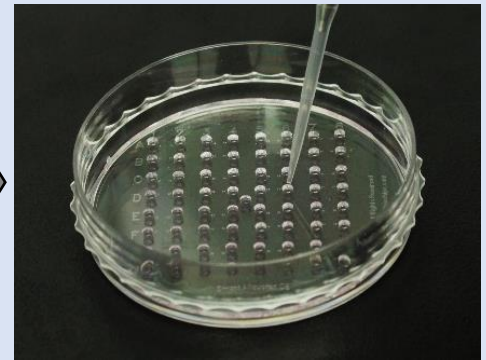
1. Rapidly isolate ~ 20 single cells in 20 seconds



2. Conveniently identify single cells in 1.8-mm diameter of wells



3. Easily retrieve single cells in 2 μ L of suspensions

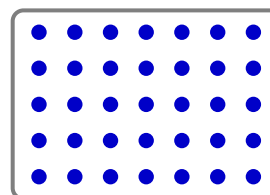


Applications

- ✓ Single-Cell Isolation
- ✓ Single-Cell Lysis
- ✓ Single-Cell Multiomics
- ✓ Single-Cell PCR & Sequencing
- ✓ CRISPR Cell Isolation
- ✓ Stem Cell Isolation

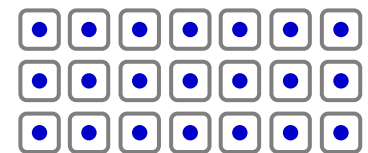
~ 35

cells added



~ 21

single cells isolated



Features

- ✓ Easy operation by regular pipette, no special instrument and skills required
- ✓ Compatible with most cell sizes & types
- ✓ Small wells allow precise identification of isolated single cells without cell labeling procedure
- ✓ Gentle and uniform flow allowing cells to keep very high viability and integrity
- ✓ Small single-cell isolation volume to meet various single-cell genetic analysis needs
- ✓ No liquid backflow and cross-talk between wells

Number of isolated single cells

