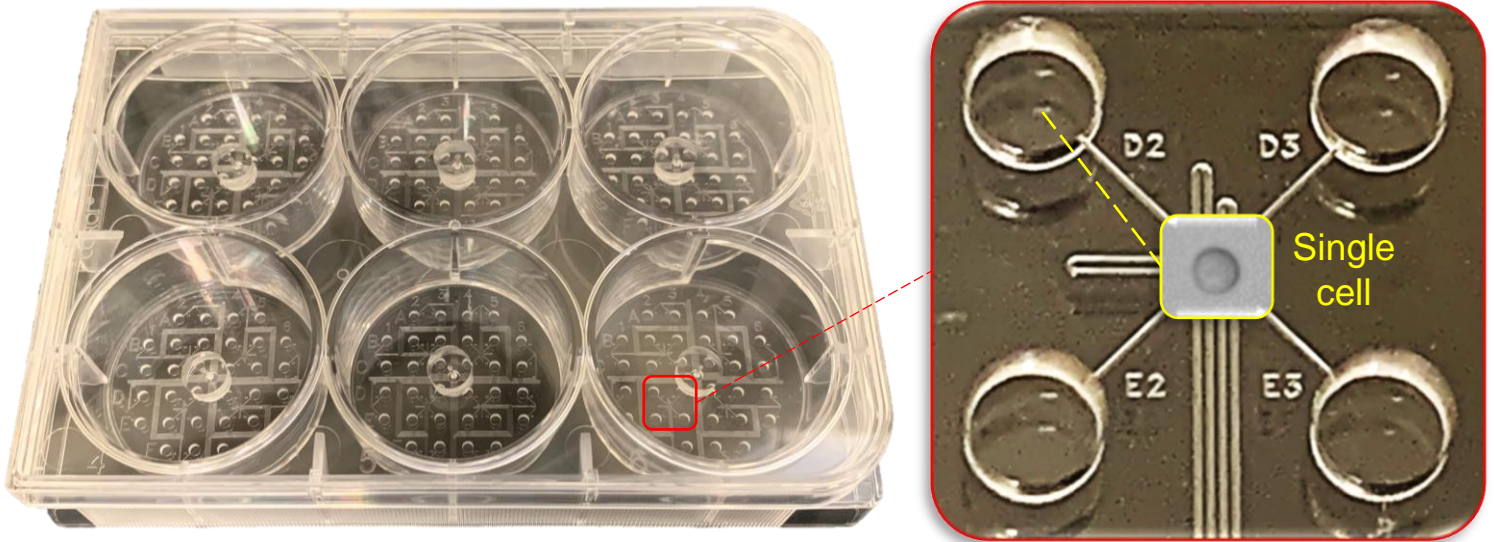


Smart Aliquotor mini (SA mini) provides a very simple and efficient method to isolate single cells for genetic analysis and clonal analysis.



## Specifications

## Description

Material of device	Biocompatible PS & PDMS
Format	6-Well Plate
Sterilization of device	Sterile
# of well / Label of well	192 wells / millimeter- & micrometer-scale numbers
Size of well	1.8 mm (Diameter) & 1 mm (Height)
Bottom coating of well	Tissue culture treated
Working volume	2-3 $\mu$ L per well
Handling of liquids & single cells	Regular single-channel pipette
Cell size can be compatible	$\leq 80 \mu$ m
# of single cells can be isolated	~ 60 per device
# of cell types can be handled	Up to 6 per device

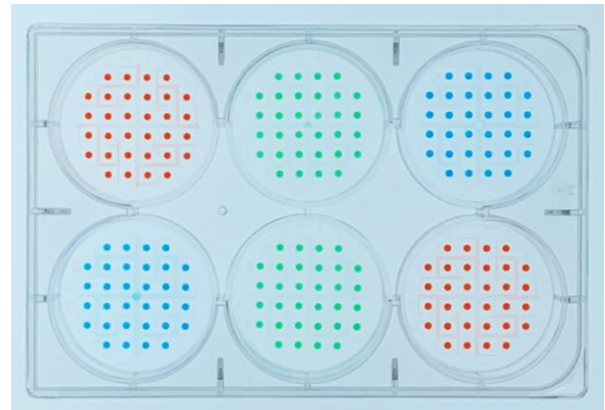
# Single-Cell Isolation

- Easy aliquoting by regular single-channel pipette
- Enable to isolate single cells from 6 different cells

Before Aliquoting



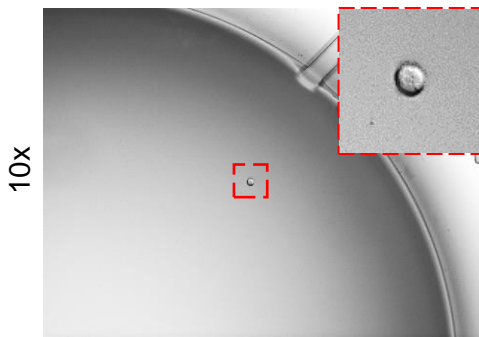
After 6 Times of Aliquoting



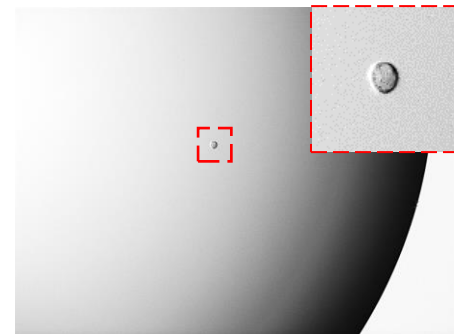
# Single-Cell Retrieval

- Efficient retrieval by regular single-channel pipette
- Transfer a single cell in approximately 1.5  $\mu\text{L}$  volume

Before Retrieval



After Retrieval



# Single-Cell Cloning

- High cloning efficiency due to high single cell viability
- Easy to track whole cloning process in 1.8 mm well

Day 1



Day 2



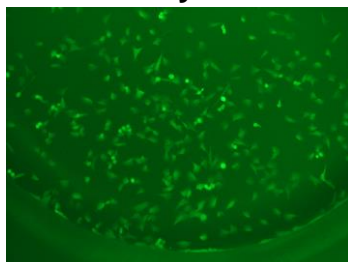
Day 3



Day 6



Day 8



Day 10

