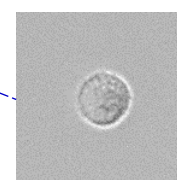
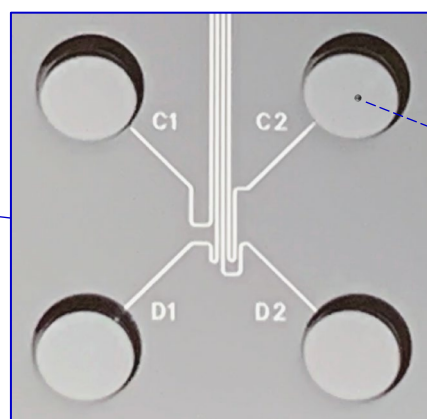
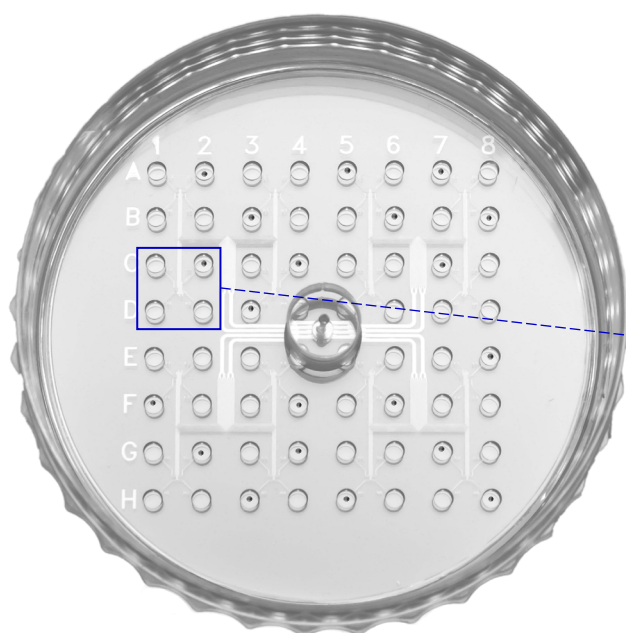


**1CellDish™-60mm Ultra-Low Volume 64-Well Single-Cell Isolation Petri Dish provides an easy and rapid method to isolate single cells into 2  $\mu$ L volumes for various downstream analyses, including single-cell lysis, PCR, and sequencing.**

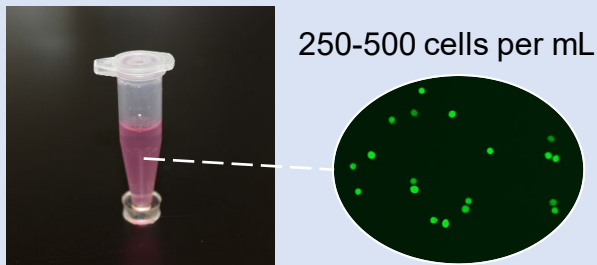


Isolate 1 cell  
in 2  $\mu$ L volume

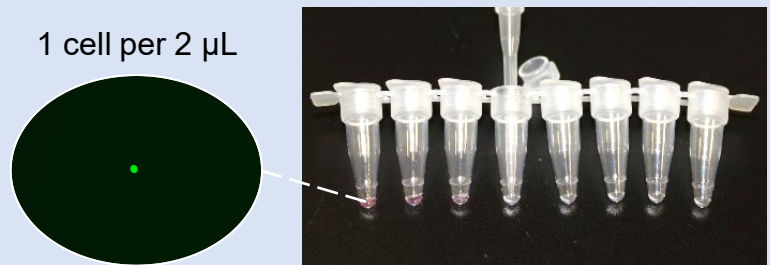
Cat. No. H2-SCD-5PK

Specifications	Description
Format	Standard 60 mm Petri Dish format
Material	Polystyrene & PDMS
Sterility	Sterile
No. of Wells	64 wells (8 x 8 array)
Well Volume	2.5 $\mu$ L per well
Well Bottom	Flat polystyrene
Surface Treatment	Tissue culture-treated
Single-Cell Yield	~ 20 per device
Single-Cell Isolation Volume	2 $\mu$ L
Compatible Cell Size	$\leq$ 50 $\mu$ m (diameter)
Cell Types Can Be Isolated	1 cell type per device

## Initial Cell Suspension

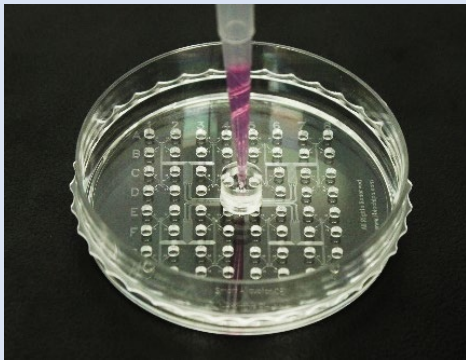


## Final Cell Suspension: 1 Cell in 1 Tube

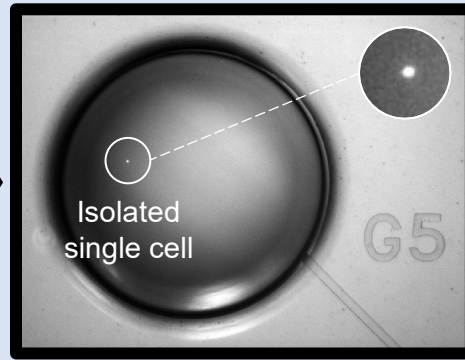


## Single-Cell Isolation by 1CellDish™-60mm

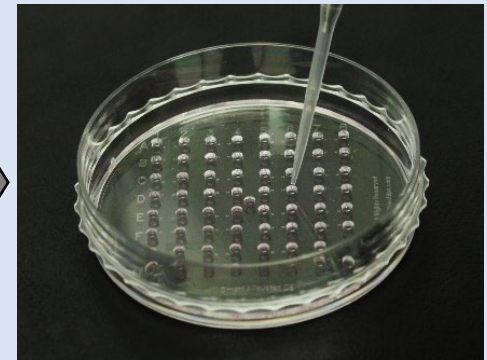
1. Rapidly isolate ~ 20 single cells in 20 seconds



2. Conveniently identify single cells in 1.8-mm diameter of wells



3. Easily retrieve single cells in 2  $\mu$ L of suspensions



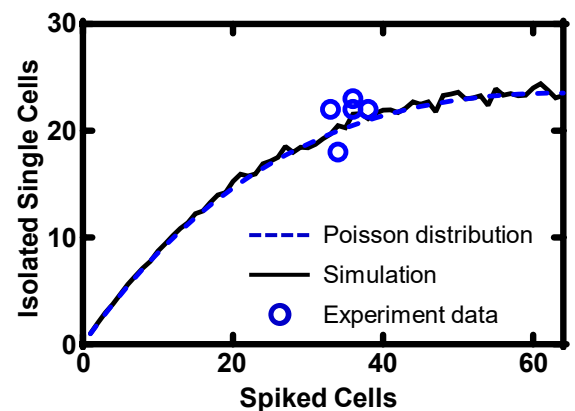
## Features

- ✓ Compatible with cell diameter  $\leq 50 \mu\text{m}$
- ✓ Compatible with cell numbers  $\leq 100$  cells
- ✓ Easy single-cell identification in 1.8 mm well
- ✓ Ultra-low single-cell isolation volume: 2  $\mu\text{L}/\text{cell}$
- ✓ Gentle microflow keeps high single-cell viability
- ✓ No liquid backflow and cross-talk between wells
- ✓ Easy operation by regular pipette in a sterile hood
- ✓ No special equipment or operation skills are required

## Applications

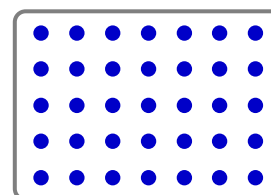
- ✓ Single-Cell Isolation
- ✓ Single-Cell Lysis
- ✓ Single-Cell Multiomics
- ✓ Single-Cell PCR & Sequencing
- ✓ CRISPR Cell Isolation
- ✓ Stem Cell Isolation

## Number of isolated single cells



~ 35

cells added



~ 21

single cells isolated

