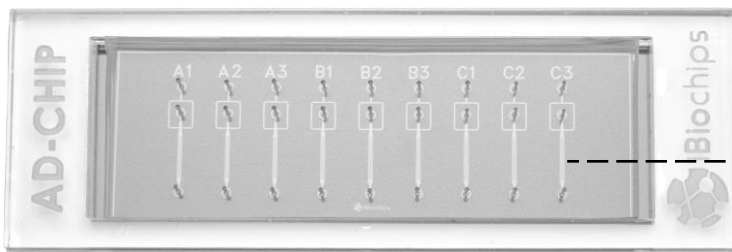


**Automated Dissection Chip (AD-Chip) Size Screening** provides a method to rapidly screen out the most suitable trap size to study single budding yeasts for whole-lifespan tracking with high spatiotemporal resolution.

## AD-Chip Size Screening



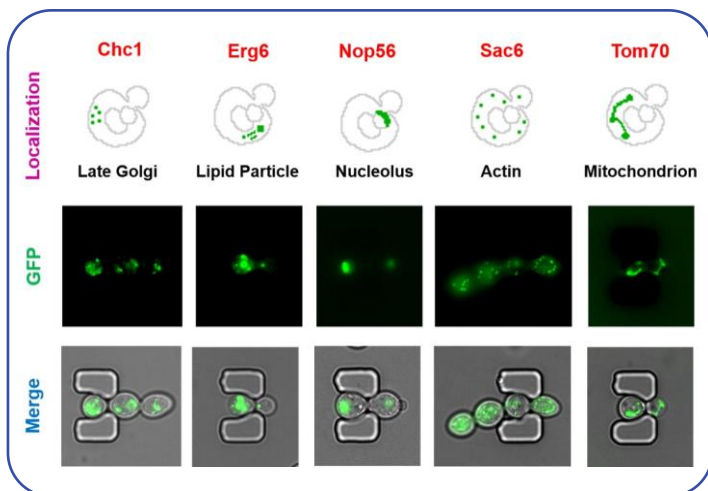
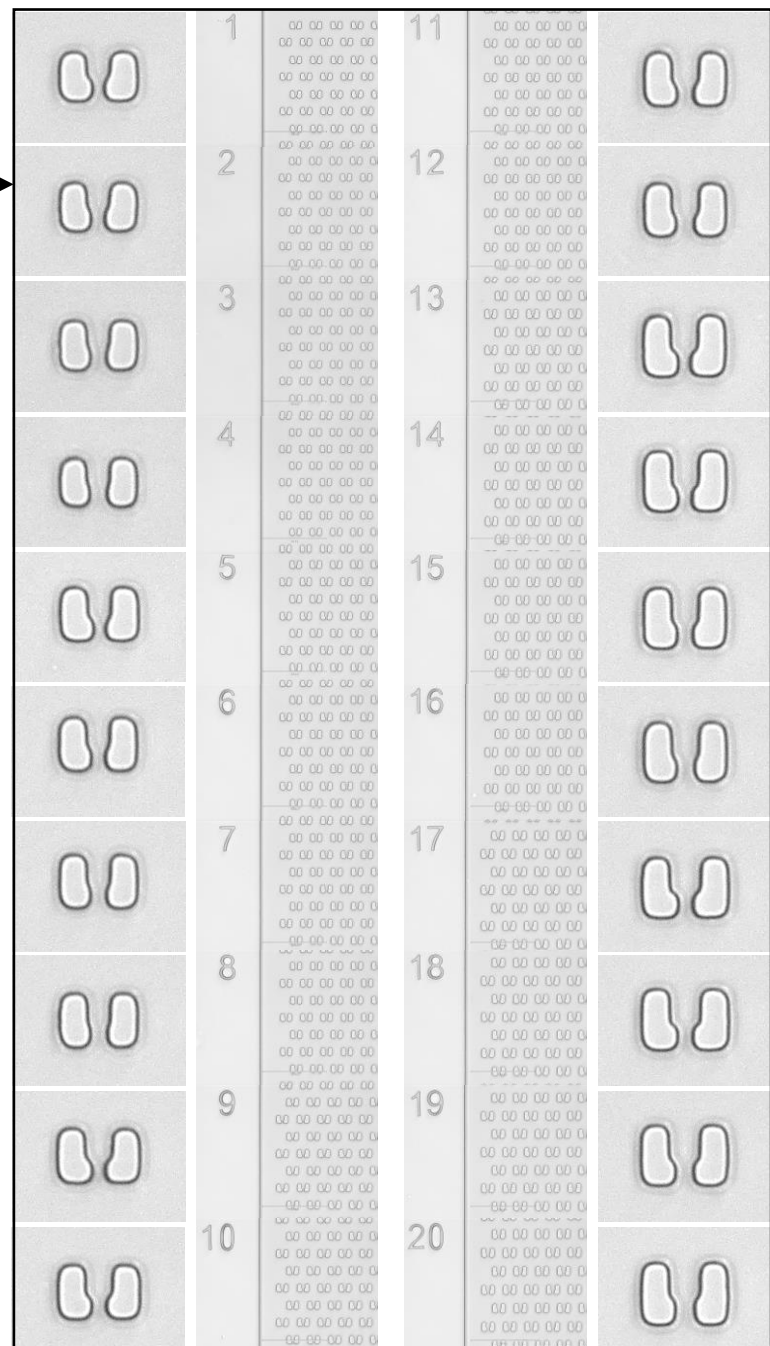
Cat. No. [A3-ADS-5PK](#)

## Applications

Rapid Trap Size Screening for Wild-Type Yeasts and Yeast Mutants

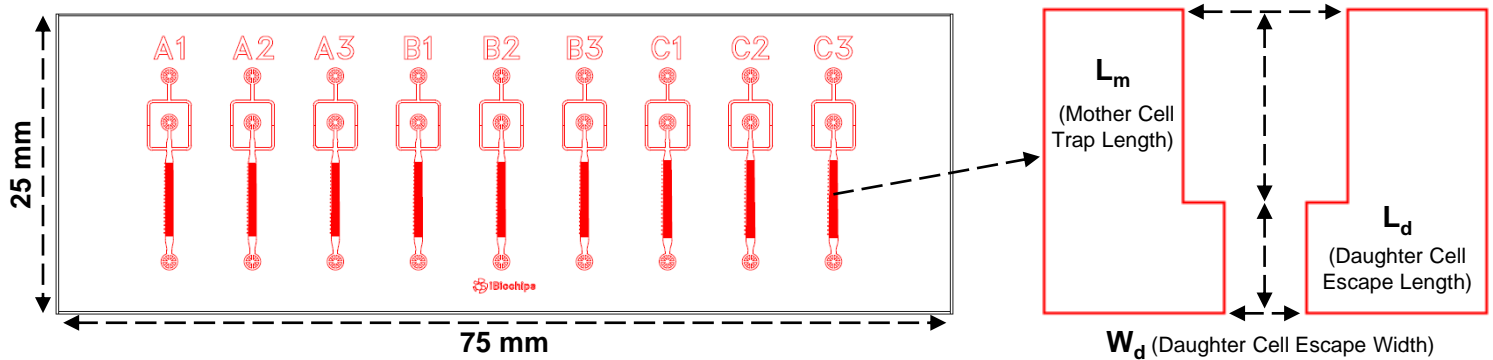
Automated whole-lifespan tracking with high spatiotemporal resolution

One channel contains 20 different size traps



# Specifications of AD-Chip Size Screening

AD-Chip Size Screening has 9 channels with 2,000 traps/channel

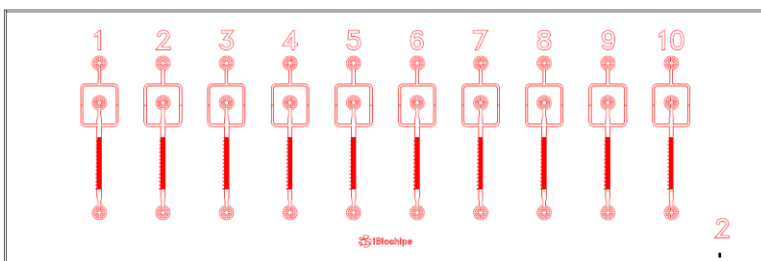


All Trap Dimensions in A-Channels, B-Channels, and C-Channels (unit:  $\mu\text{m}$ )

Ch.	Sp	1	2	3	4	5	6	7	8	9	10	11	12	13	14	15	16	17	18	19	20
A	$W_m$	6	6	6	6	6	6	6	6	7	7	7	7	7	7	7	7	8	8	8	8
	$L_m$	6	6	6	6	7	7	7	7	7	7	7	7	8	8	8	8	8	8	8	8
	$W_d$	3	3.5	4	4.5	3	3.5	4	4.5	3	3.5	4	4.5	3	3.5	4	4.5	3.5	4	4.5	5
	$L_d$	4	4	4	4	4	4	4	4	4	4	4	4	4	4.5	4.5	4.5	4.5	4.5	4.5	4.5
B	$W_m$	6	6.06	6.12	6.18	6.24	6.3	6.36	6.42	6.48	6.54	6.6	6.66	6.72	6.78	6.84	6.9	6.96	7.02	7.08	7.14
	$L_m$	7	7.07	7.14	7.21	7.28	7.35	7.42	7.49	7.56	7.63	7.7	7.77	7.84	7.91	7.98	8.05	8.12	8.19	8.26	8.33
	$W_d$	3	3.03	3.12	3.09	3.12	3.18	3.21	3.21	3.21	3.27	3.3	3.3	3.36	3.39	3.45	3.48	3.48	3.48	3.54	3.57
	$L_d$	4	4.04	4.08	4.12	4.16	4.2	4.24	4.28	4.32	4.36	4.4	4.44	4.48	4.52	4.56	4.6	4.64	4.68	4.72	4.76
C	$W_m$	6	6.12	6.24	6.36	6.48	6.6	6.72	6.84	6.96	7.08	7.2	7.32	7.44	7.56	7.68	7.8	7.92	8.04	8.16	8.28
	$L_m$	7	7.14	7.28	7.42	7.56	7.7	7.84	7.98	8.12	8.26	8.4	8.54	8.68	8.82	8.96	9.1	9.24	9.38	9.52	9.66
	$W_d$	3	3.06	3.12	3.18	3.24	3.3	3.36	3.42	3.48	3.54	3.6	3.66	3.72	3.78	3.84	3.9	3.96	4.02	4.08	4.14
	$L_d$	4	4.08	4.16	4.24	4.32	4.4	4.48	4.56	4.64	4.72	4.8	4.88	4.96	5.04	5.12	5.2	5.28	5.36	5.44	5.52
Trap Depth	Two depths are available: 5.1 $\mu\text{m}$ and 5.6 $\mu\text{m}$																				

After Screening Desired Trap: Choose AD-Chip Customized Size

AD-Chip Customized Size



Cat. No. [A4-ADC-5PK](#)

No. A2 trap size ( $W_m=6$ ,  $L_m=6$ ,  $W_d=3.5$ ,  $L_d=4$ )

- ✓ 1,050 same-size traps per channel
- ✓ 10 channels per AD-Chip Customized Size
- ✓ 5.1  $\mu\text{m}$  and 5.6  $\mu\text{m}$  trap depth are available
- ✓ Glass coverslip bottom (0.16 mm thickness)
- ✓ 75 mm (Length), 25 mm (Width), 4 mm (Height)
- ✓ 1 Inlet for media, 1 Inlet for yeast, 1 Outlet for waste