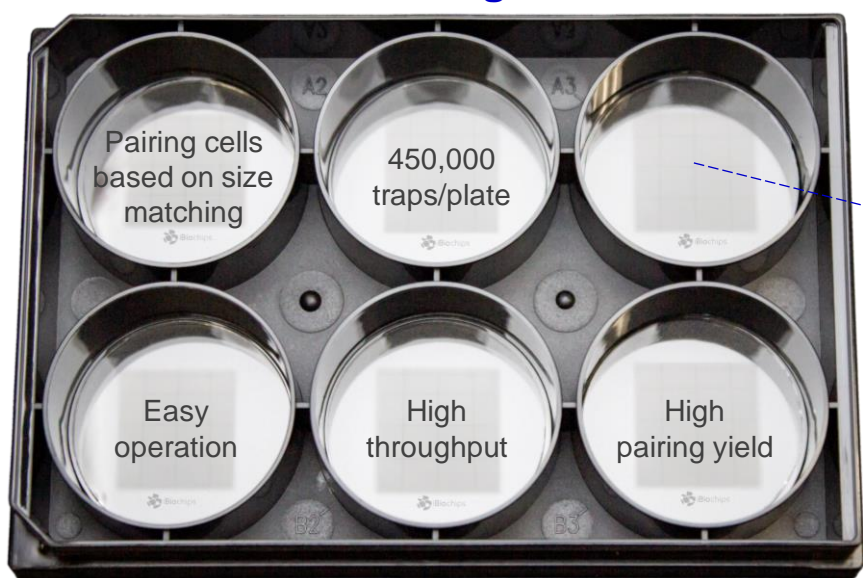


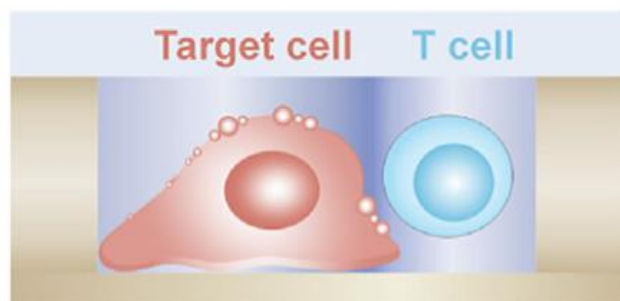
**Cell Pairing Plate** can efficiently achieve desired cell-cell or cell-bead pairing in a high-throughput manner, enabling live imaging of cell-cell interactions and single-cell cytokine secretion assay.

## Cell Pairing Plate



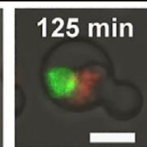
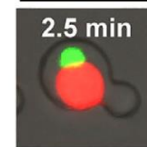
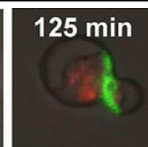
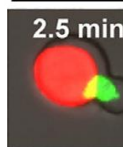
Cat. No. P6-CPP-5PK

## Cell Pairing in a 2-Well Trap



Pulsed by NY-ESO-1 peptide

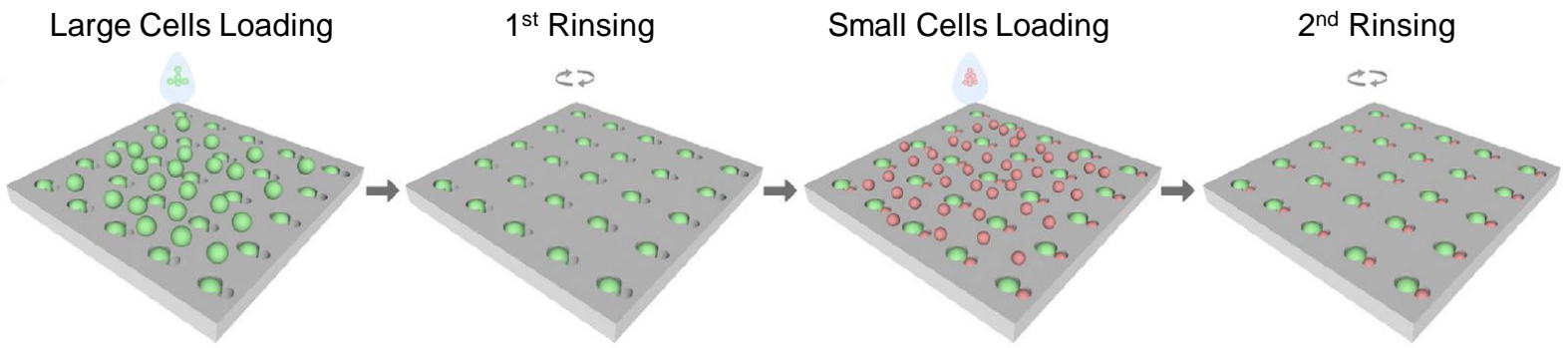
Pulsed by NY-ESO-V peptide



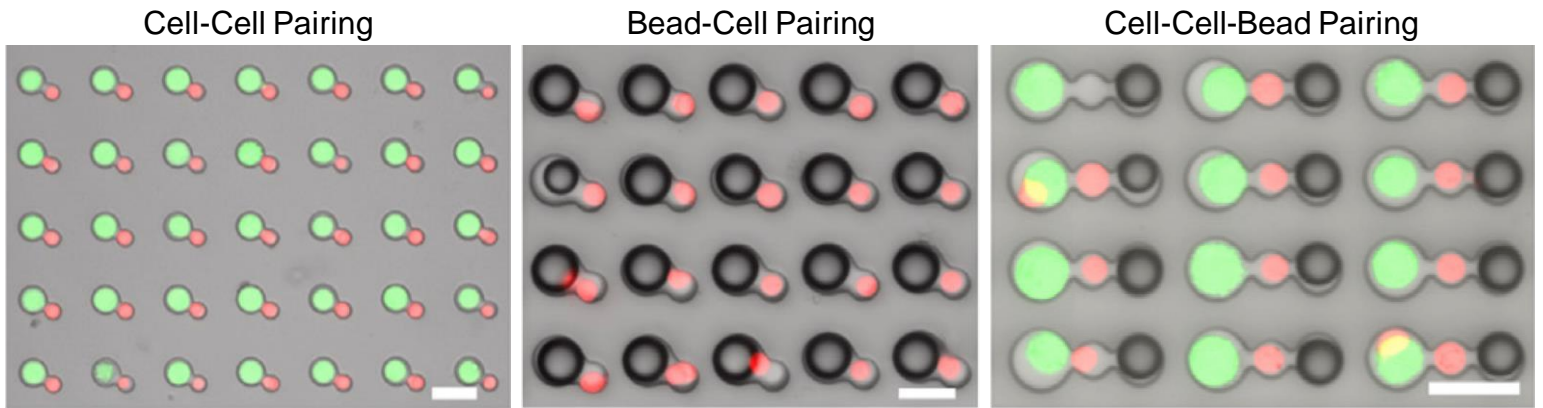
Specifications	Description
Format	Standard 6-well plate format
Material	Biocompatible PDMS, polystyrene, and/or glass
Sterility	Sterile
No. of Traps	450,000 (75,000 traps/well x 6 wells)
Well Depth*	30-50 $\mu\text{m}$
Cell-Pairing Yield	Up to 90%
Compatible Cell Size*	7-10 $\mu\text{m}$ (effector cells) and 12-17 (target cells)
Compatible Bead Size*	$\sim$ 20 $\mu\text{m}$ (streptavidin-coated polystyrene beads)

\* Well size, depth, and numbers can be customized for specific cell/bead pairing applications.

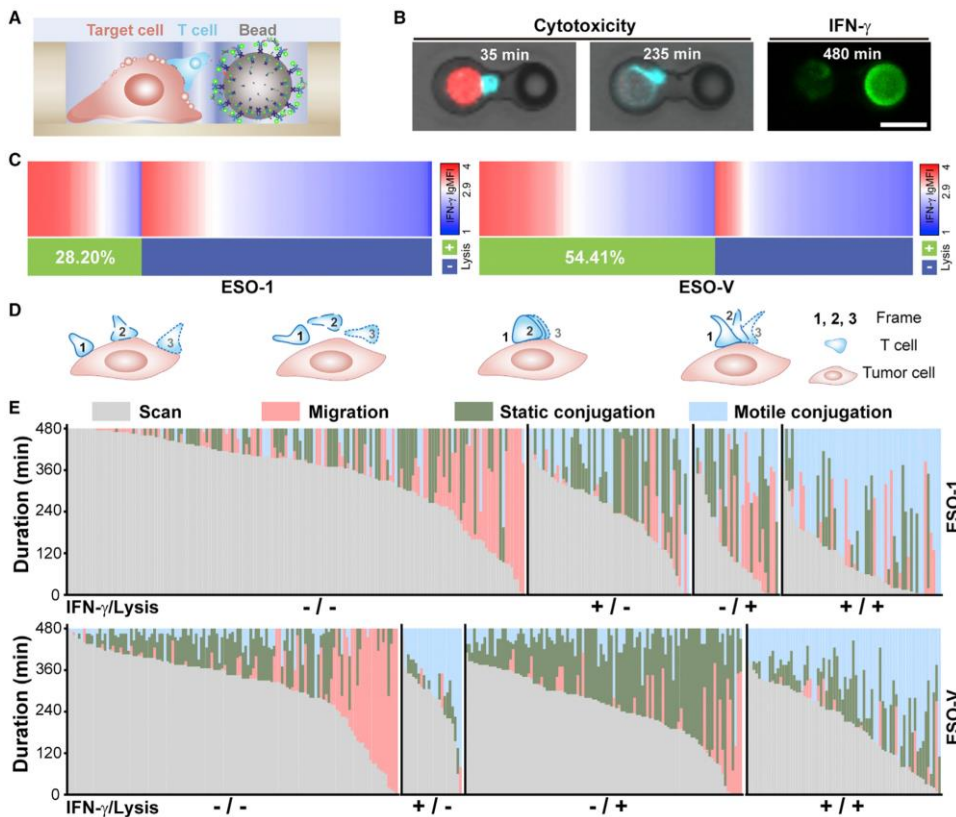
# Operation of Two Cells Pairing



## Representative Microscopic Images of Cells / Beads Pairing



## Cytotoxicity & Cytokine Secretion Assays



## Main Applications

